

Measuring the American Social Contract

Part 4 of 4

Social Contract Indicators: Social Dialogue

Lauren Damme
Next Social Contract Initiative, New America Foundation
July, 2011

Valuable research assistance provided by: Amanda Huffman and Kristen Johnson

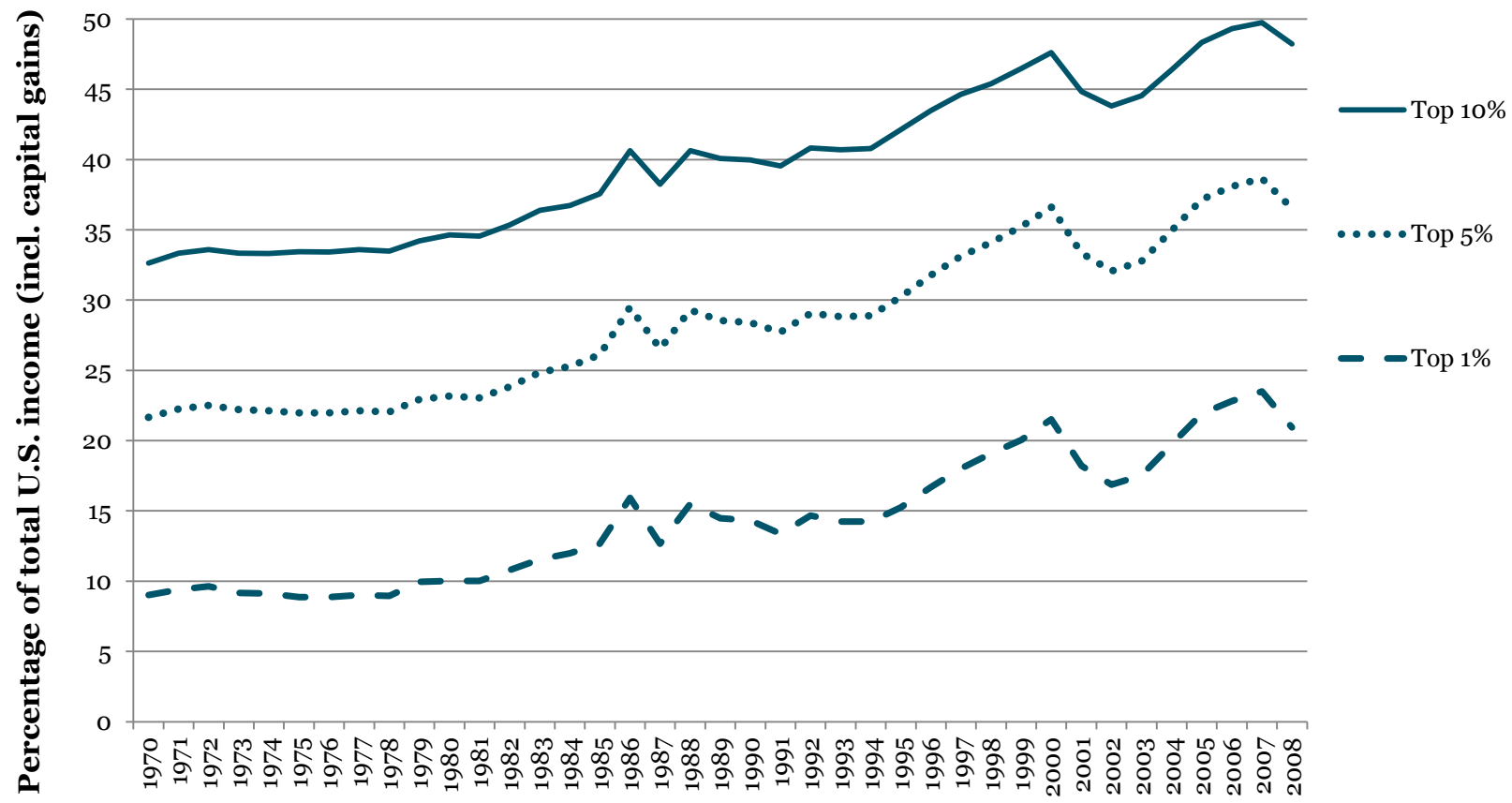
Contents*

1. U.S. Inequality as an Indicator of Weakened Social Dialogue
2. Inequality, International Comparison
3. Worker Productivity Outpaces Real Wage Growth
4. Wage Stagnation for Americans without Bachelor Degrees or Higher
5. Employers Move from Defined Benefit to Defined Contribution Pensions
6. U.S. Provides a Low Wage Floor: Minimum Wage Relative to Median Wage Levels
7. U.S. Has Low Trade Union Density
8. Few U.S. Workers Are Covered by Collective Bargaining Agreements

*For full descriptions, citations, and context, see: *Rethinking the American Social Contract: The International Labor Organization's Decent Work Agenda in the United States*, by Lauren Damme

Social Contract Indicators: Inequality in the U.S.

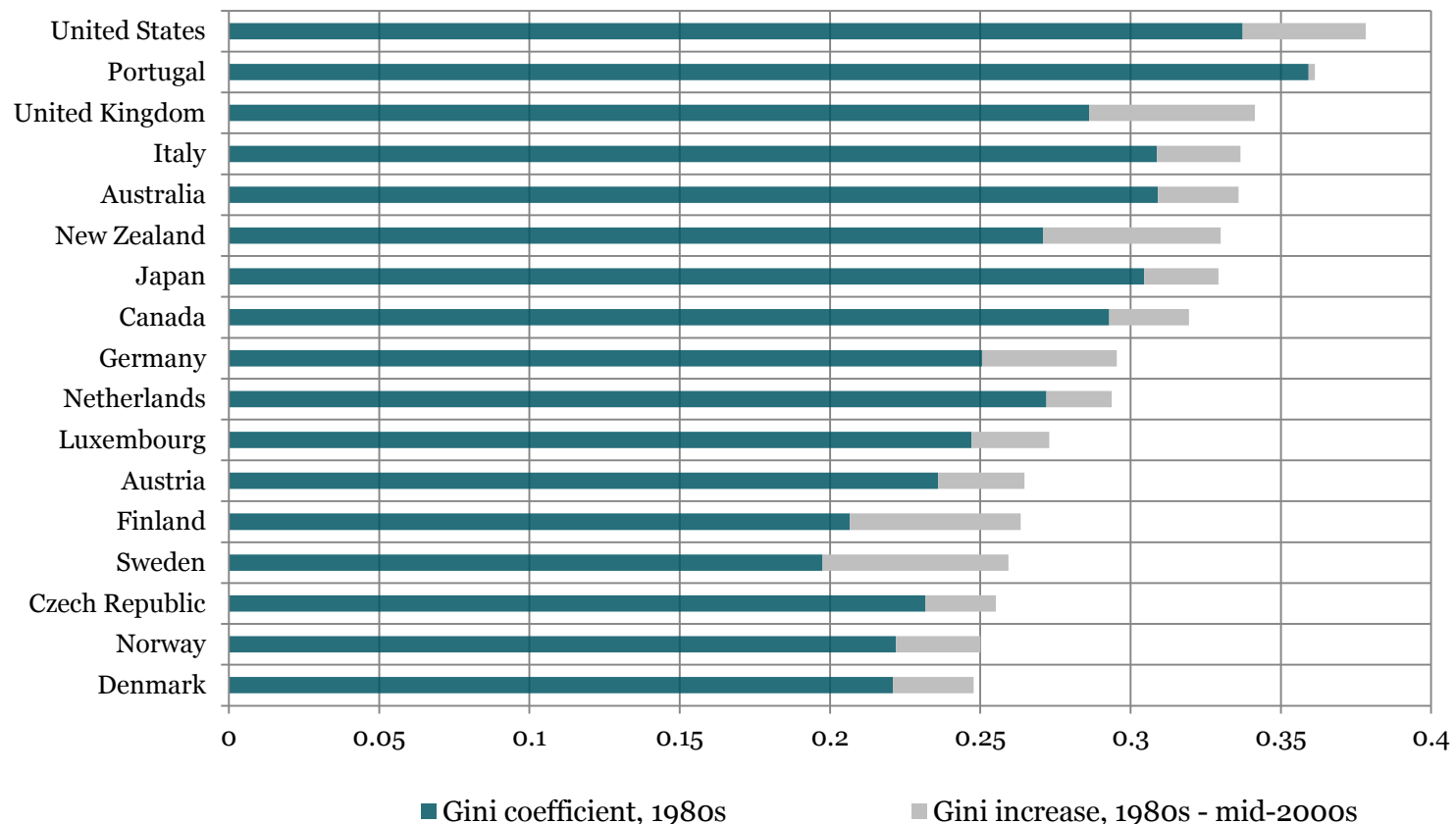
Growth in Inequality Points Toward Weak Social Dialogue: Top 10 Percent of Americans Take Home Almost 50 Percent of U.S. Income, 1970-2008



Source: Piketty and Saez, 2010. Includes capital gains. Data from IRS tax returns.

Social Contract Indicators: Inequality in Developed Countries

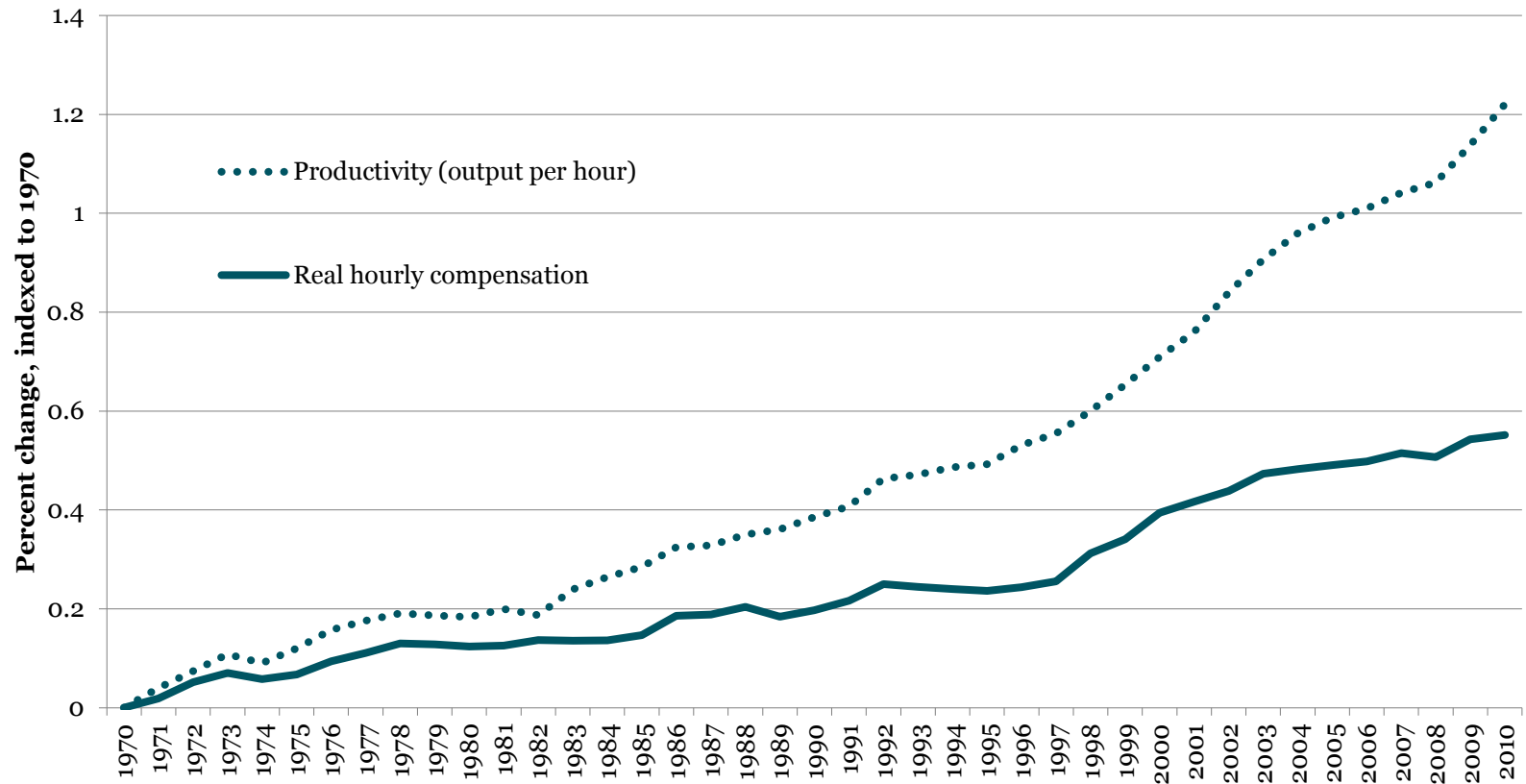
U.S. Has Highest Levels of Inequality of Wealthy OECD Countries (as Measured by the Gini Coefficient) 1980s – Mid-2000s



Source: OECD, *Society at a Glance*, 2011.

Social Contract Indicators: Productivity and Wage Growth

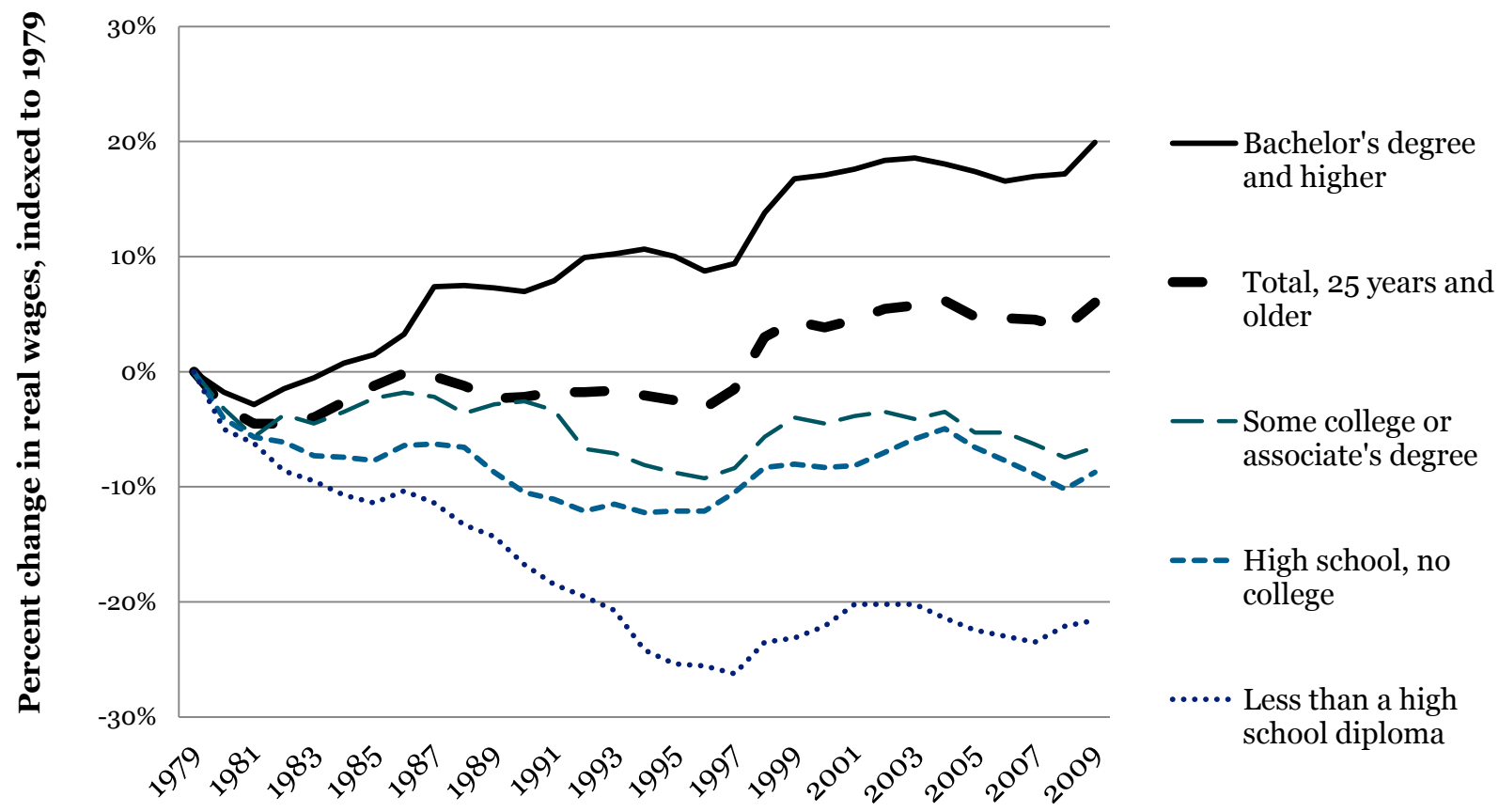
Workers' Compensation Does Not Increase in Line with Their Productivity Growth, 1970-2010



Source: Author's analysis of BLS Major Sector Productivity and Costs Index, 2011.

Social Contract Indicators: Wages stagnate for most

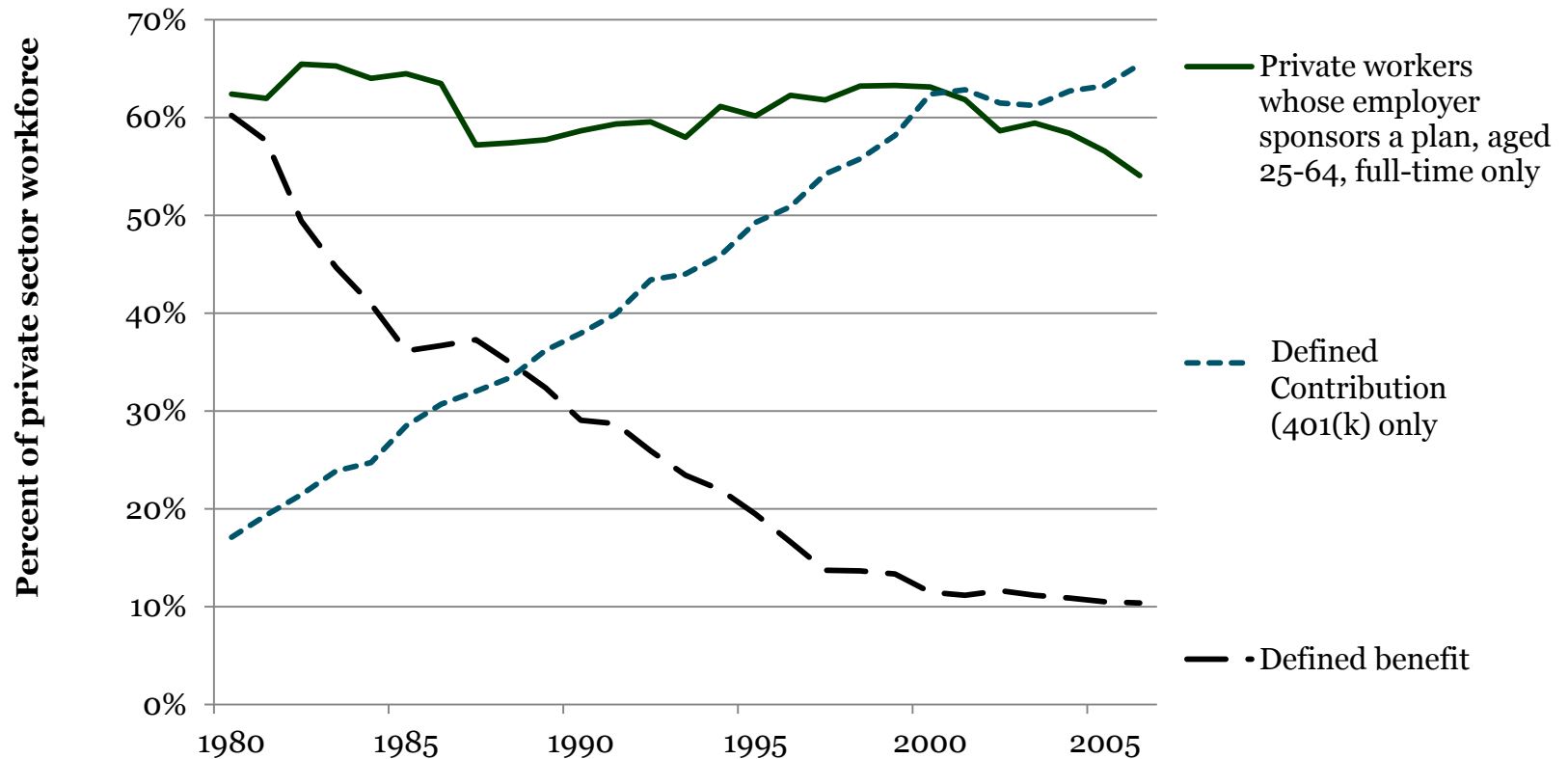
Only the College-Educated – 30.4 Percent of the Current Labor Force - Enjoy Significant Real Wage Growth Since 1980



Source: U.S. Bureau of Labor Statistics, June 2010.

Social Contract Indicators: Workers take on pension risks

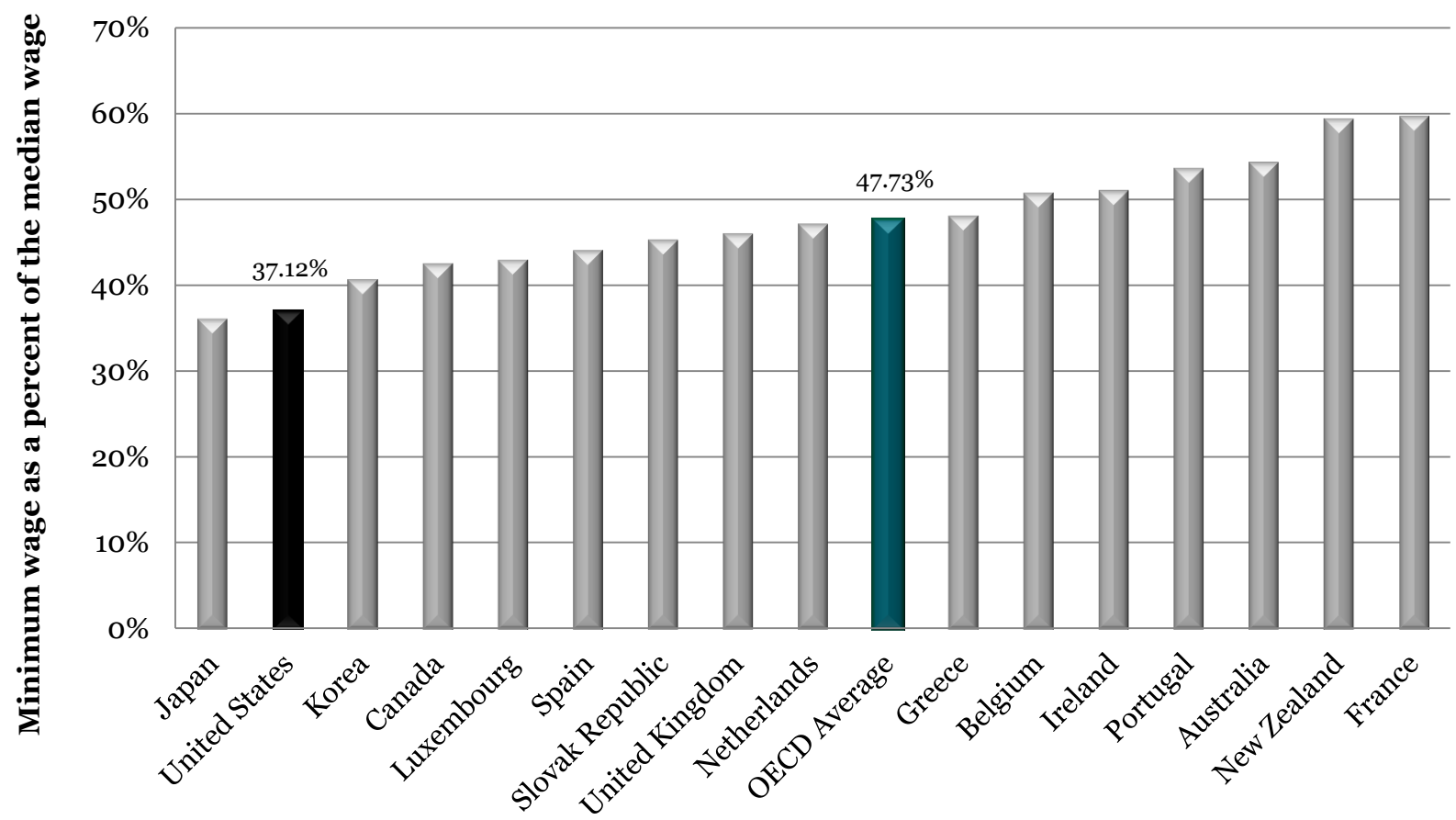
Employers Move to Defined Contribution Pensions, Push Risk onto Workers, 1980-2006



Source: Center for Retirement Research, 2009.

Social Contract Indicators: U.S. provides low wage floor

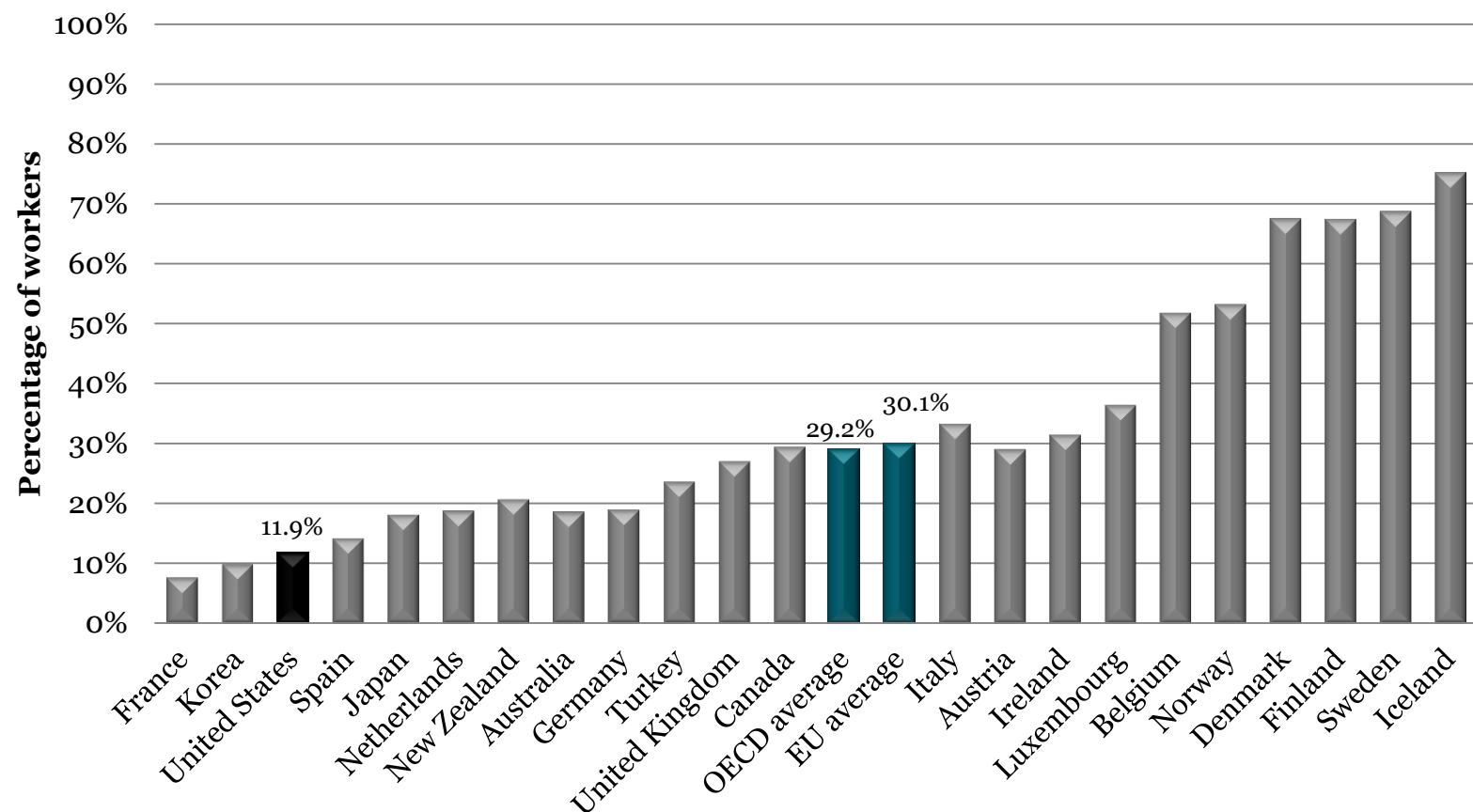
U.S. Has a Relatively Low Minimum Wage, 2009



Source: OECD, 2011.

Social Contract Indicators: Trade Union Density

U.S. Has Low Trade Union Density, 2008¹

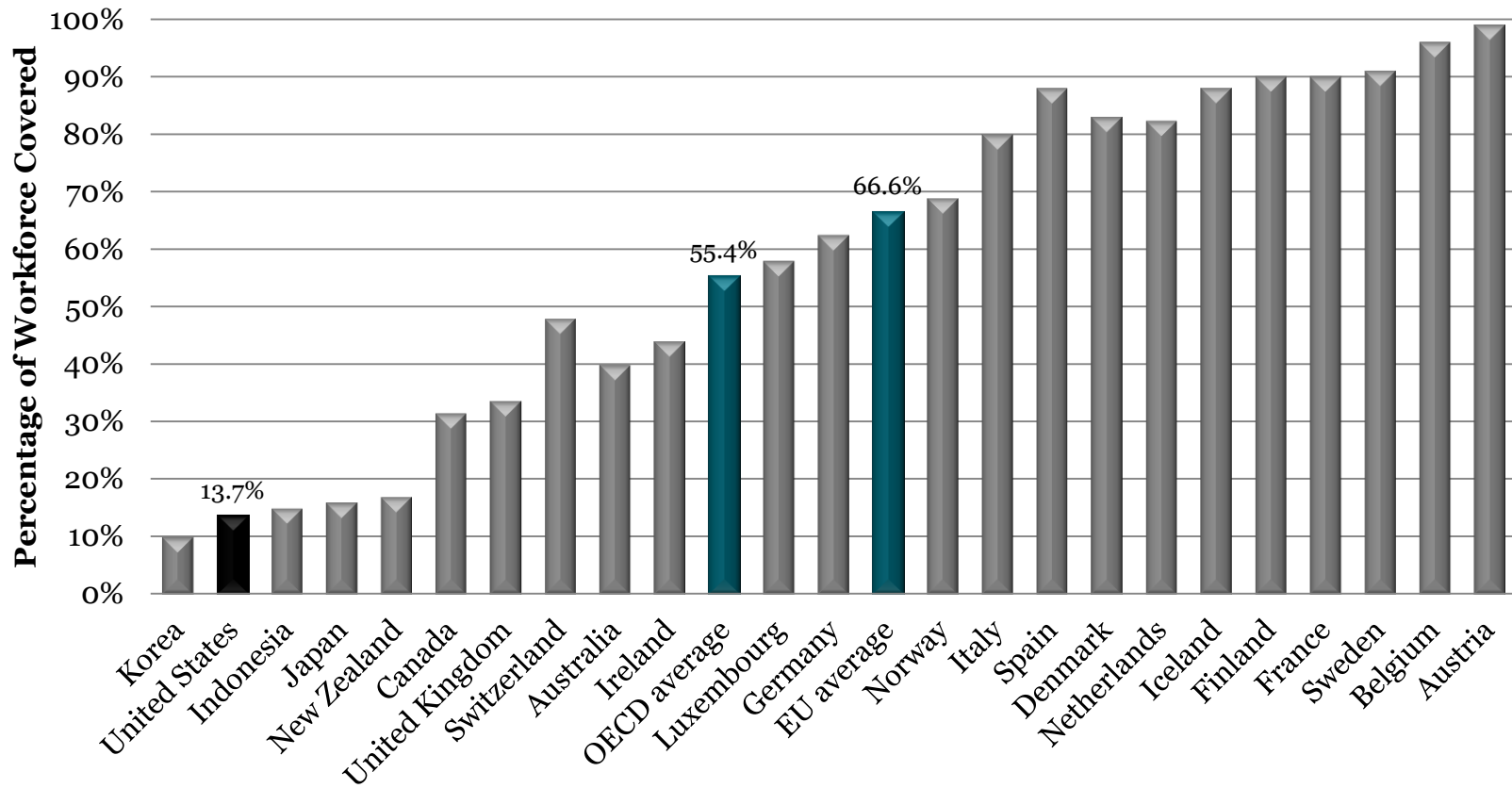


Source: OECD, 2011.

1. The union density is the percentage of workers belonging to a trade union. The rates refer to wage and salary workers in both public and private sectors.

Social Contract Indicators: Collective Bargaining Coverage

U.S. Has Very Low Coverage Rates of Collective Bargaining Agreements, 2008¹



Source: OECD, 2011.

1. The coverage rate is measured as the percentage of workers who are covered by collective bargaining agreements in both the public and private sectors, regardless of whether or not they belong to a trade union.